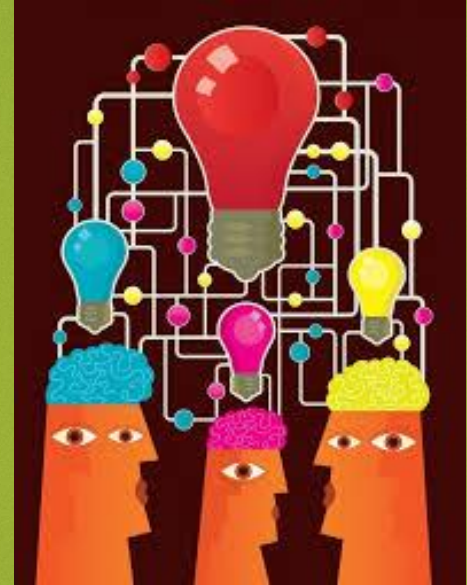


Behavioral Health-Primary Care Integration Learning Collaborative Survey

Wednesday, December 2, 2015

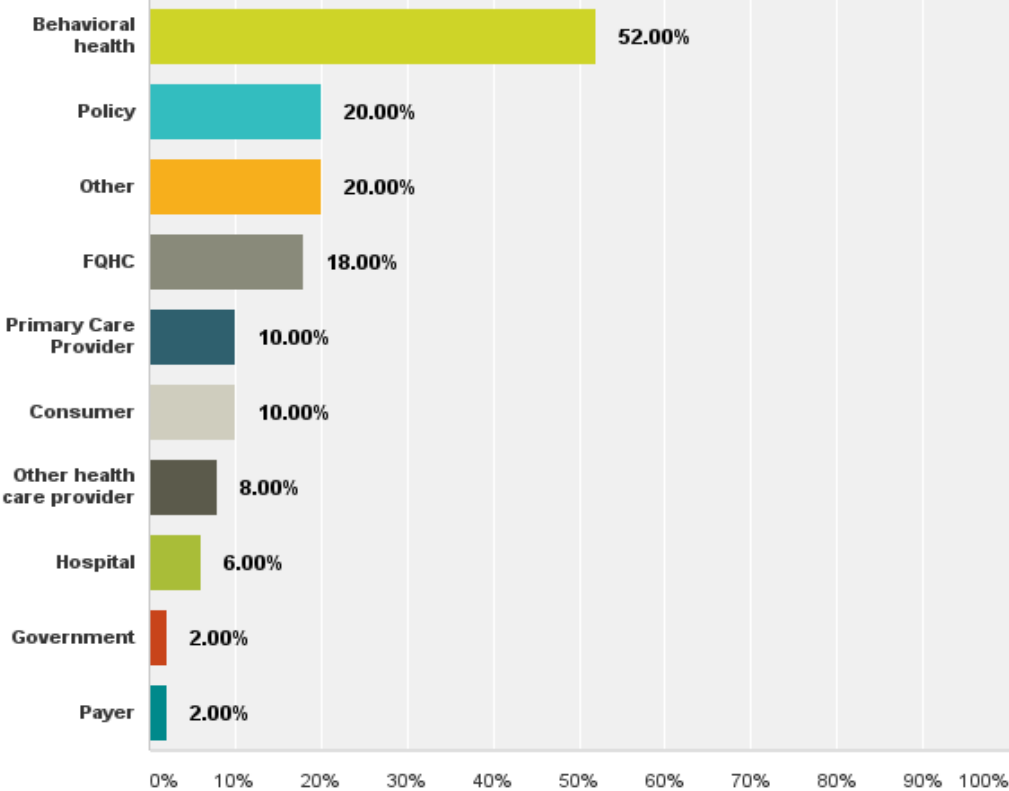


50

- ▶ Total Responses
- ▶ Date Created: Tuesday, September 15, 2015
 - ▶ Complete Responses: 41

Q1: Survey Respondents by Type

Answered: 50 Skipped: 0



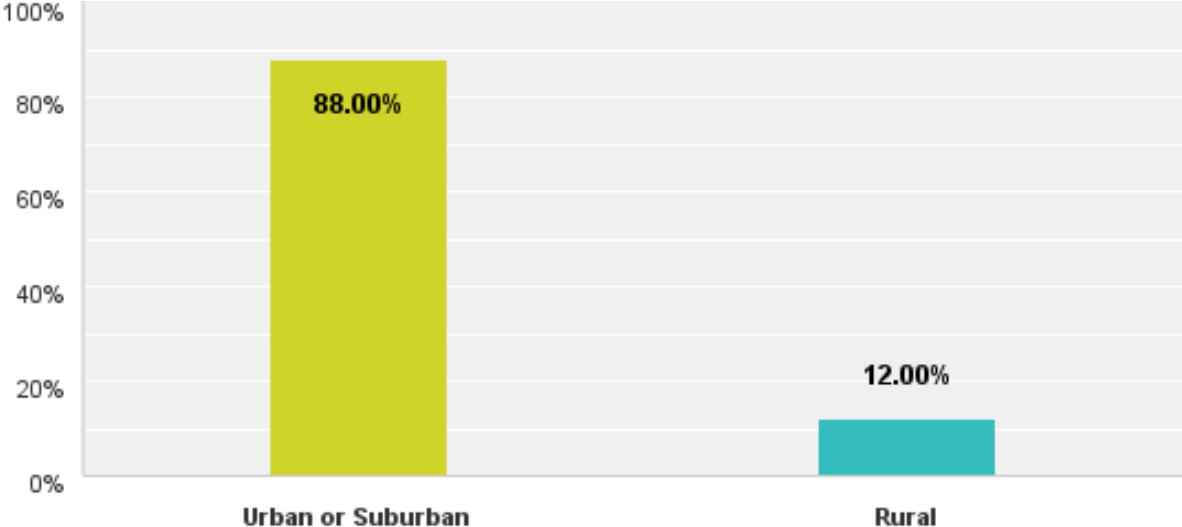
WHO WERE THE “OTHERS” RESPONDING?

- Family member/advocate
- Peer Support Specialist
- Medical Legal Partnership member
- Health technology partner
- Social workers and social service agencies
- Intellectual/Development disability services provider



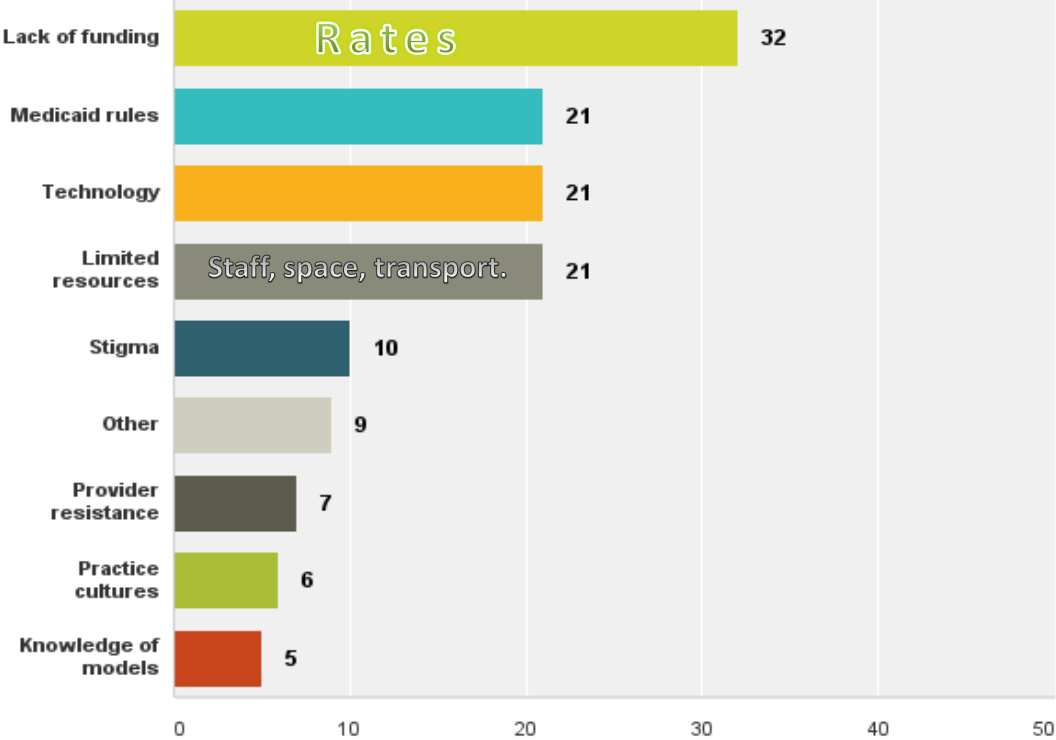
Q2: Survey Respondents by Geography

Answered: 50 Skipped: 0



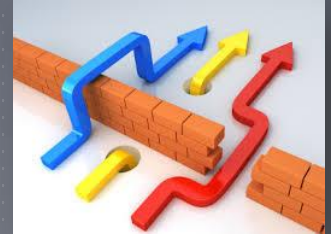
Q3: Top Barriers to Integration

Answered: 44 Skipped: 6



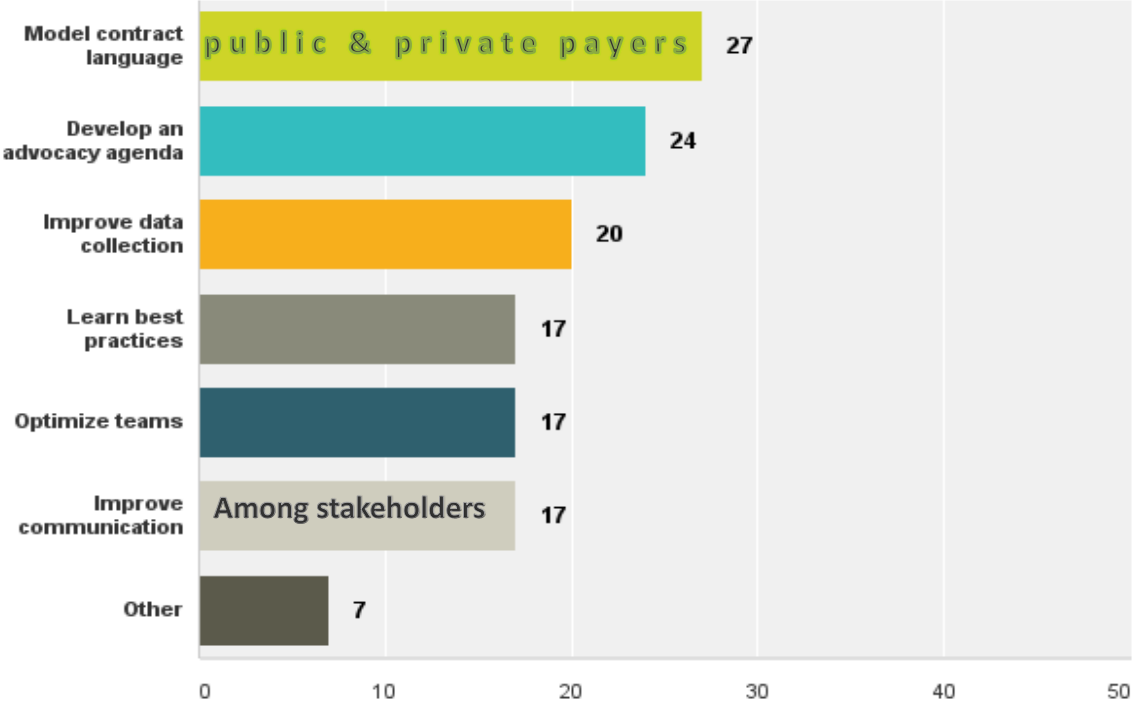
Q3: “OTHER” TOP BARRIERS TO INTEGRATION

- Housing! And supportive services
- Lack of bilingual providers
- Narrow networks in managed care
- Limited awareness of recovery model in primary care
- Sharing health information can violate patients’ rights to privacy
- Underutilization of certified recovery support specialists



Q4: Top Outcomes for the Learning Collaborative

Answered: 43 Skipped: 7



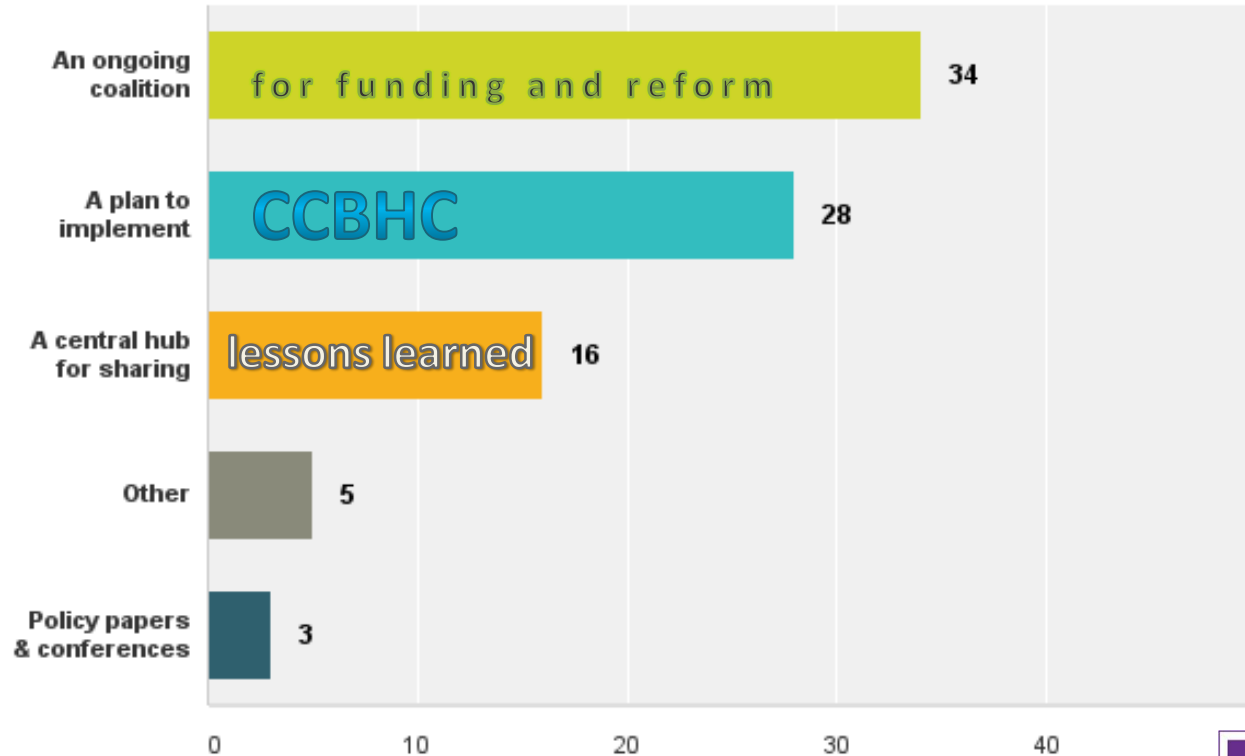
Q4: “OTHER” TOP OUTCOMES

- Highlight consumer voice in health care
- Incorporate supportive housing in integrated models
- Educate legislators and state agencies on integration and the importance of breaking down their own silos and fragmented payment systems



Q5: Top Long-Term Goals of the Learning Collaborative

Answered: 43 Skipped: 7



Q5: “OTHER” TOP LONG-TERM GOALS

- Explore ways to fund peer support services
- Promote models that include housing as a component of integrated health care
- Pilot models that integrate primary care into behavioral health settings as well as bringing behavioral health interventions into primary care



TAKEAWAYS

- ▶ We're onto something!
 - ▶ 50 responses from diverse stakeholders
 - ▶ Confirmed that people care about:
 - ▶ Integration
 - ▶ Collaboration & Advocacy
 - ▶ Specific issues like contracting with MCOs and implementing CCBHCs



TAKEAWAYS

- ▶ We need to pay more attention to:
 - ▶ HOUSING
 - ▶ PEER SUPPORT
 - ▶ RECOVERY MODELS

